

Technical Rider – Tumbalafusta

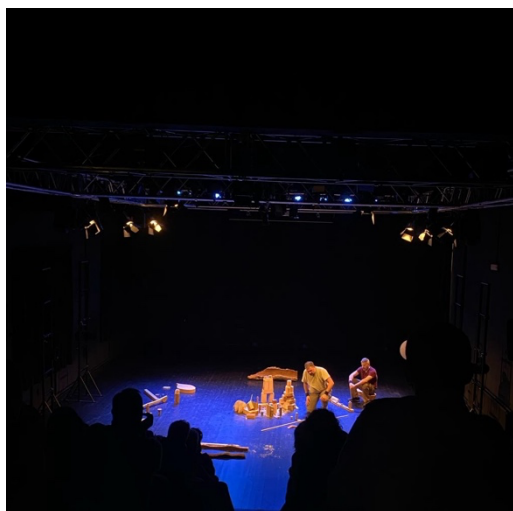
CIA: La Ruta 40

Tumbalafusta is a close-up family show. Whenever possible, two rows of cushions will be placed at the front so that children in the audience can sit on the floor.

Stage Requirements:

- Minimum dimensions: 6m width x 8m depth
- Black linoleum covering the entire performance area
- Black box in Italian-style staging
- Preference for non-elevated stages. If using elevated stages, consider the possibility of having the audience on stage.

With an audience in the stands



With an audience on stage



Sound:

- PA system capable of uniformly covering the audience area.
- 2 sidefills
- Digital sound console with 16 channels and at least 4 outputs

Lighting::

DMX connection within 20m max from the performance area

- **Projectors (adaptable to the venue)**

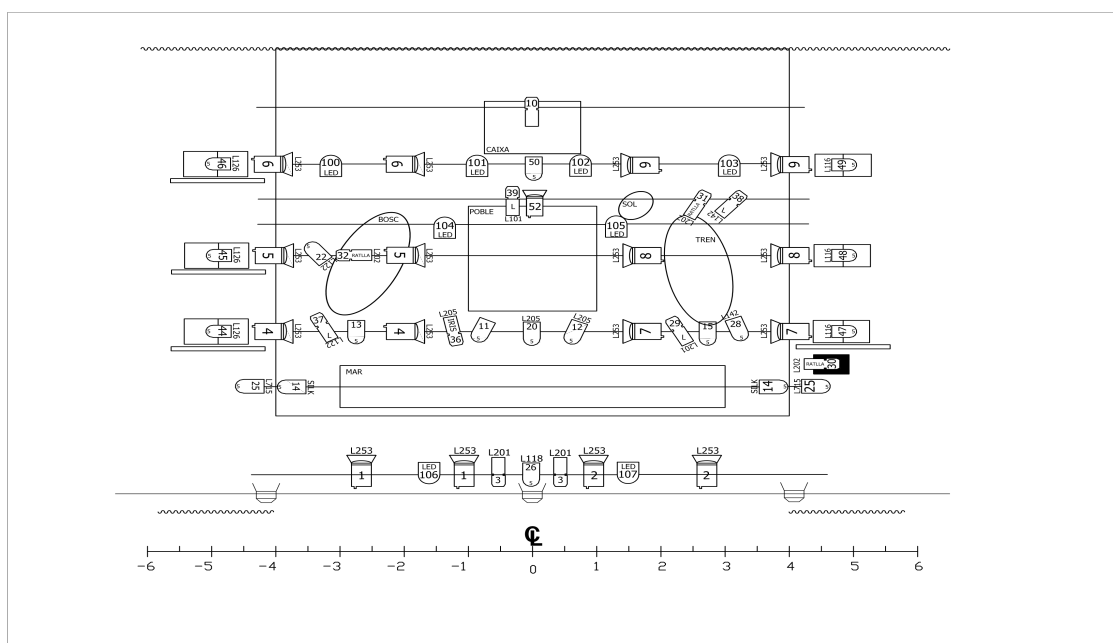
- 19 PAR 64 (nº5, cp 62) with filter holders
- 18 PC 1Kw with barn doors and filter holders
- 11 Profile spotlights 1Kw with filter holders
- 3 Asymmetric floodlights
- 1 Iris

- **Structures**

- 1 floor stands
- 6 Dance boom structures (height of 150m)

- **Dimming and control**

- 1 programmable lighting console
- 48 dimmer channels



Contact:

Maria Rovelló (Production): 639 544 353 produccio@laruta40.net
 Esther Porcel (Technique): 667 736 564 epfauquet@gmail.com